



91 & 91S SERIES

QPL: MS21423



MIL-PRF-15305

ELECTRICAL SPECIFICATIONS

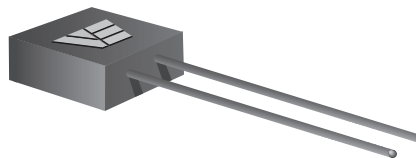
- **Operating Temperature:** -55°C to +125°C
- **Storage Temperature:** -60°C to +130°C
- **Temperature Rise @ 90°C:** < 35°C
- **Inductance at rated DC:** < 30%
- **Dielectric Withstanding Voltage:** 700 V_{RMS}
- **Inductance Tolerances:** 0.01 to 0.082 uH, ± 20%; 0.10 to 1.0 uH, ± 10%; (closer tolerances on request)
- **Inductance TC:** +150 ppm/°C nominal; +200 ppm/°C Max
- **Frequency Range:** 25 to 150 MHz
- **Maximum Dissipation:** 200 mW
- **Terminal Pull:** 5 pounds
- **Overload Current:** 1.4 times the rated current
- **Different electrical values available upon request**

FEATURES

- **Low External Magnetic Field** of toroid permits tighter packaging of units that with other inductive devices
- **Leads:** Tin-lead coated copper wire
- Designed to meet **MIL-PRF-15305**, Grade 1, Class B
- **Moisture, Shock and Immersion Resistant**
- **Altitude Rating:** 70,000 ft
- Order to Mil-spec part number or VE part number
- Compliant to **MIL-STD-981**, Family 13

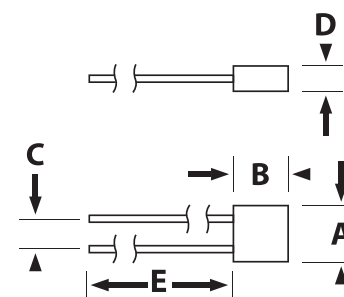
Inductance Range (uH)	DCR max (Ohms)	Current Rating (mA)
0.01 to 1.0	0.02 to 0.40	700 to 3000

91 SERIES

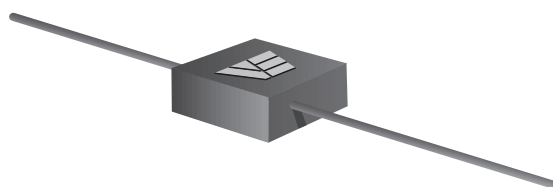


DIMENSIONAL DATA - INCHES

A	0.200 ± 0.010
B	0.200 +.030/- .00
C	0.100 ± 0.010
D	0.100 ± 0.010
E	1.0 MIN.

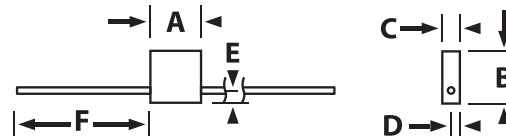


91S SERIES

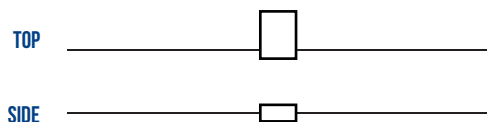
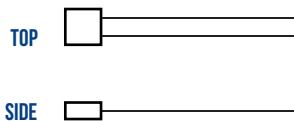


DIMENSIONAL DATA - INCHES

A	0.200 ± 0.010
B	0.260 MAX.
C	0.100 ± 0.010
D	0.050 ± 0.010
E	0.050 ± 0.015
F	1.0 MIN.



ACTUAL SIZE





DATA TABLE

VE P/N	MS21423 Dash Number	Side-Lead Part Number	Inductance Nom (uH)	Q Min	Test Freq (MHz)	SRF Min (MHz)	DCR Max (Ohms)	DC Current Max (mA)
9101	-01	9101S	0.010	60	150	1000	0.02	3000
9102	-02	9102S	0.012	60	150	1000	0.02	3000
9103	-03	9103S	0.015	60	150	1000	0.02	3000
9104	-04	9104S	0.018	60	150	1000	0.02	3000
9105	-05	9105S	0.022	60	100	900	0.02	3000
9106	-06	9106S	0.027	60	100	800	0.02	3000
9107	-07	9107S	0.033	60	100	750	0.02	3000
9108	-08	9108S	0.039	60	100	700	0.02	3000
9109	-09	9109S	0.047	60	100	650	0.02	3000
9110	-10	9110S	0.056	60	100	600	0.02	3000
9111	-11	9111S	0.068	60	100	550	0.03	2500
9112	-12	9112S	0.082	60	100	500	0.04	2200
9113	-13	9113S	0.10	80	50	450	0.04	2200
9114	-14	9114S	0.12	80	50	400	0.05	2000
9115	-15	9115S	0.15	80	50	350	0.06	1800
9116	-16	9116S	0.18	80	50	320	0.07	1600
9117	-17	9117S	0.22	80	50	300	0.08	1500
9118	-18	9118S	0.27	80	50	280	0.10	1400
9119	-19	9119S	0.33	80	50	260	0.12	1300
9120	-20	9120S	0.39	80	50	240	0.15	1150
9121	-21	9121S	0.47	80	50	220	0.20	1000
9122	-22	9122S	0.56	70	50	200	0.25	900
9123	-23	9123S	0.68	70	50	180	0.30	800
9124	-24	9124S	0.82	70	50	160	0.35	750
9125	-25	9125S	1.0	70	50	150	0.40	700

CUSTOM DESIGNS & MODIFICATIONS:

Other electrical configurations and performance characteristics are available in various sizes and package types

91 & 91S SERIES

